



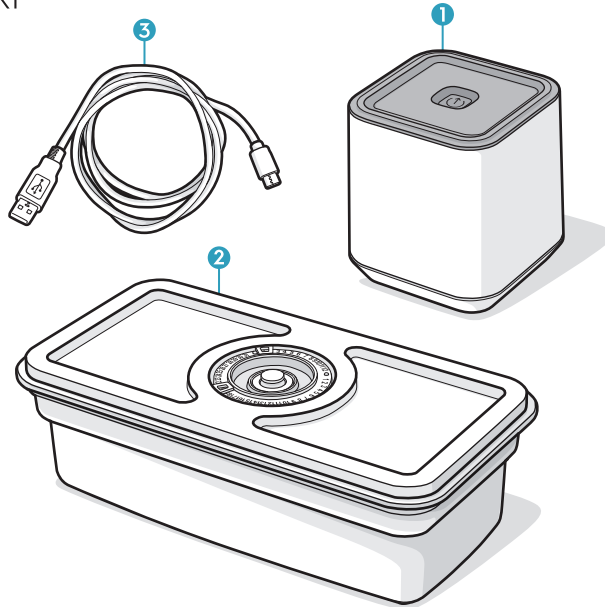
electrolux.com

electrolux.com/shop

electrolux.com/support

Create 3 Vacuum Fresh Kit

Model: EAVFKI

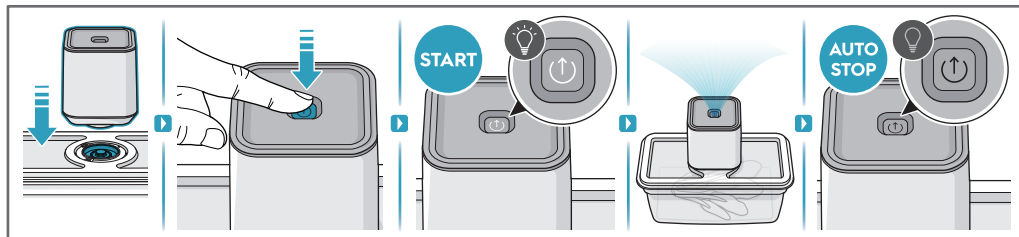


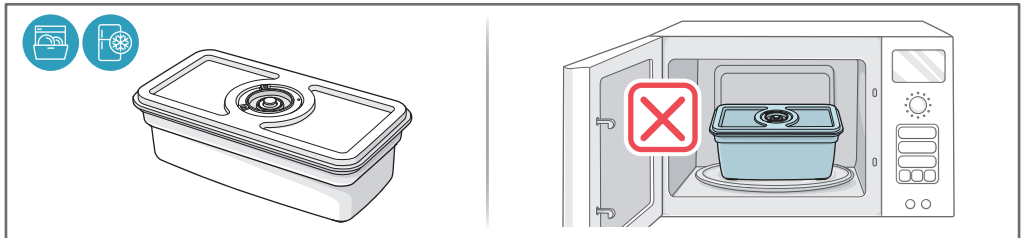
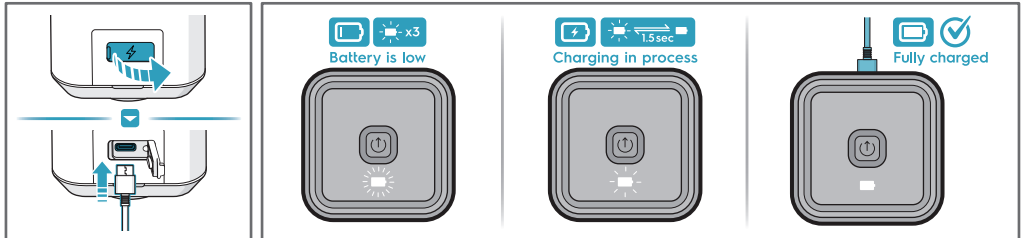
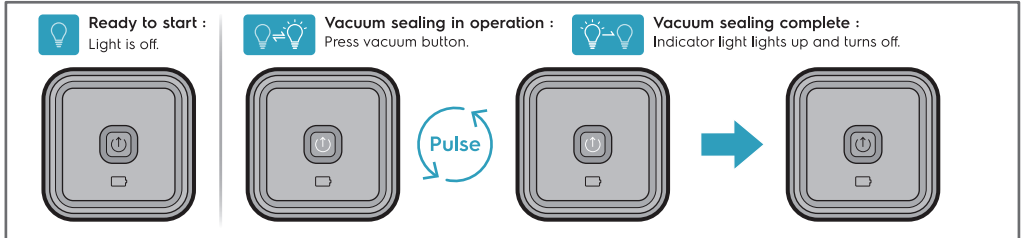
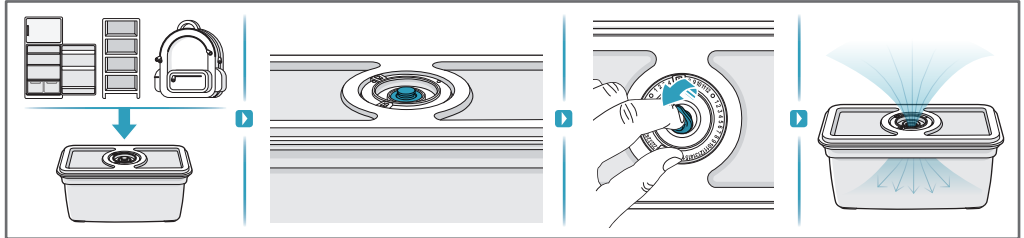
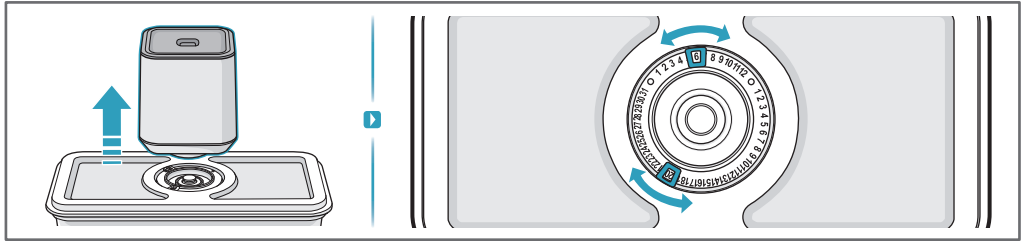
Product Overview:

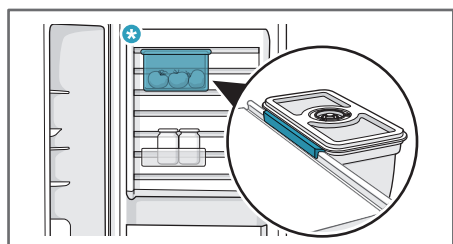
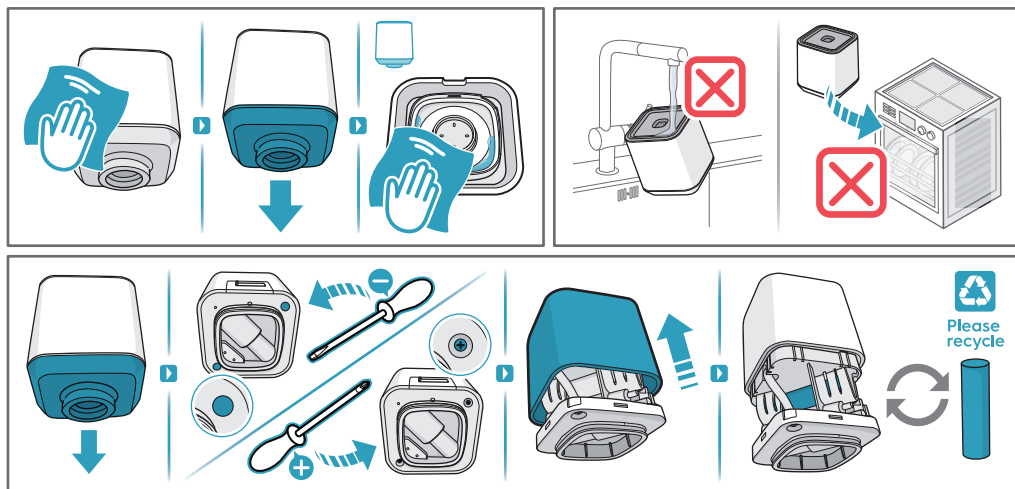
1. 1x Vacuum Pump
2. 2x Vacuum Food Containers (1.0L)
3. 1x USB-Cable

www.electrolux.com

* Accessories may vary from model to model. | Les accessoires peuvent varier d'un modèle à l'autre. | Ausstattung und Zubehör kann je nach Modell variieren. | Accessoires kunnen per model verschillen. | Tillbehören kan variera mellan olika modeller. | Lisävarusteet voivat vaihdella malleittain. | Tilbehør kan variere fra model til model. | Tilbehør kan variere fra model til model. | Tilbehør kan variere fra model til model. | Los accesorios pueden variar según el modelo. | Os acessórios podem variar de modelo para modelo. | Gli accessori possono variare da modello a modello. | Τα εξαρτήματα ίσως διαφέρουν από μοντέλο σε μοντέλο. | Lisad võivad mudelist mudelisse varieeruda. | Prieda i kitiems modeliams gali skirtis. | Akcesoria mogą się różnić w zależności od modelu. | Piederumi katram modelim var a tskirties. | Příslušenství se může u jednotlivých modeleů lišit. | Doplnky sa môžu líšiť v závislosti od modelu. | Dodaci se mogu razlikovati kod određenih modela. | Nastavki se lahko glede na model razlikujejo. | Принадлежности могут отличаться от модели к модели. | Ці компоненти можуть відрізнятися залежно від моделі. | A tartozékok típusonként eltérőek lehetnek. | Accesorile pot diferi de la model la model. | Приналежностите може да се различават според различните модели. | Aksesuarlar, modelden modele farklılık gösterebilir. | رخآل لىيؤوم نم فلىتخت دق تاقومدا.







* Fits to refrigerators with CustomFlex

LNS9TDI9S**, ERE7001W, ERE8000W1, ERE8000X1, EUE8000W1, EUE8000X1, KRB1AH35W, KUT5NH23W, LLI19VF54X0, LNC5TE34X2, LNC6FE34X2, LNC6ME37X2, LNC7MD32W2, LNC7ME32W1, LNC7ME32W2, LNC7ME32X1, LNC7ME32X2, LNC7ME34W1, LNC7ME34W2, LNC7ME34X1, LNC7ME34X2, LNT7MD32X2, LNT7MD34X2, LNT7ME32X2, LNT7ME34X2, LRC4AF35W, LRC4DF35W, LRC4DF35X, LRC5ME38W1, LRC5ME38W2, LRC5ME38W3, LRC5ME38X0, LRC5ME38X1, LRC5ME38X2, LRC5ME38X4, LRC5MF34W, LRC5MF34X, LRC6MF36W, LRC6MF36X, LUC4NF23W, LUC4NF23X, LUC5NF23W, LUC5NF23X, LUC6NF25W, LUC6NF25X, RNC7ME32W2, RNC7ME32X2, RNC7ME34W2, RNT7ME34X2, RRC5ME38X2, SB318NFCN, SB318NFMS, SB339NFCN, SC380FCN

**

please check height, to avoid collision with shelf | s'il vous plaît vérifier la hauteur, pour éviter une collision avec l'étagère | Bitte überprüfen Sie die Höhe, um eine Kollision mit dem Regal zu vermeiden | si prega di controllare l'altezza, per evitare collisioni con lo scaffale | compruebe la altura para evitar colisiones con el estante | por favor, verifique a altura, para evitar colisões com a prateleira | kontrollera höjden för att undvika kollision med hyllan | Kontroller venligst höjden för å unnga kollision med hyllan | tarkista korkeus välttääksesi törmäyksen hyllään | controleer de hoogte om een botsing met de plank te voorkomen | riidualiga kokkupõrke vältimiseks kontrollige kõrgust | patikrinkite aukštį, kad išvengtumėte susidūrimo su lentyna | lūdzu, pārbaudiet augstumu, lai izvairītos no sadursmes ar plauktu | моля проверете височината, за да избегнете сблъсък с рафта | vă rugăm să verificați înălțimea, pentru a evita coliziunea cu raftul | proszę sprawdzić wysokość, aby uniknąć kolizji z półką | preverite višino, da se izognete trčenju s policco | kérjük, ellenőrizze a magasságot, hogy elkerülje az ütközést a polccal | Molimo provjerite visinu kako biste izbjegli sudar s policom | ελέγξτε το ύψος, για να αποφεύγετε τη σύγκρουση με το ράφι | проверьте высоту, чтобы избежать столкновения с полкой | перевірте висоту, щоб уникнути зіткнення з полицею



For better living from Sweden.
 Congratulations to your new product and joining us in the mission
 on making homes more sustainable.

Please carefully read this user manual in its entirety before using the
 vacuum pump.

A failure to comply with this user manual can lead to serious injury
 or damage the appliance. Electrolux does not accept any liability
 for damage caused by a failure to comply with this user manual.

Safety Precautions

The vacuum pump (hereinafter referred to as the "appliance") is
 intended to be exclusively used with all **ELECTROLUX vacuum
 storage solutions** to create an effective vacuum seal for
 long-lasting food storage. It may only be used with the accessories
 supplied or approved by us. Any other use is considered improper
 and may result in personal injury or property damage. The
 appliance is intended for domestic use. It is not intended for
 commercial use.

Do not use the appliance on yourself, other persons or animals.

This appliance can be used by children aged from 8 years and
 above and persons with reduced physical, sensory or mental
 capabilities or lack of experience and knowledge if they have been
 given supervision or instruction concerning use of the appliance in
 a safe way and understand the hazards involved.

Children shall not play with this appliance.

Cleaning and maintenance shall not be made by children without
 supervision.

Batteries must be removed from the appliance before it is
 scrapped.
 The battery is to be disposed of safely.

Only use the charging adapter that was provided with the product.

Packaging material, e.g. plastic bags should not be accessible to
 children to avoid suffocation.
 Keep the appliance and connecting cable in a location that is not
 accessible to children under 8 years old.

Improper handling causes the risk of fire. Only charge the battery
 using the included charging cable. Do not disassemble the battery.
 Do not short-circuit the appliance and do not throw it into fire.
 Do not open or otherwise destroy the appliance.
 The appliance is charged with electric current. There is therefore a
 danger of electric shock. The appliance is only to be used with the
 power supply unit (GQ06-050050-AG) provided with the appliance.

Make sure that the charging cable is not kinked or pinched and
 make sure that the charging cable and the appliance do not come
 in contact with sources of heat (e.g. hobs, gas flames).

Do not carry the appliance by the charging cable. Disconnect the
 charging cable from the appliance immediately after the charging
 process is complete or in the event of damage or danger.

Unplug the appliance from the charging cable prior to cleaning or
 maintenance. As long as the power adapter is plugged in, there is a
 voltage inside the appliance, even if the appliance is switched off.

Check the appliance for damage prior to each use. If you detect
 any transport damage, contact the dealer from whom you
 purchased the appliance immediately. Never operate an appliance
 that has been dropped or damaged.

The battery cells within must not be dismantled, short circuited or
 placed against a metal surface.

This appliance contains batteries that are non-replaceable.

All service or repairs must be carried out by an
 authorized service centre.

1 - Vacuum Pump

2 - Vacuum Food Containers (1.0L)

3 - Charger

Reading indicator light and battery symbol

Vacuum sealing in process: Indicator light flashing/pulsing

Vacuum sealing complete: Indicator light lights up for 2 seconds and
 then turns off

Low battery: Battery symbol starts blinking 3x

Charging: Battery symbol pulsing slow

Fully charged and ready to unplug: Battery symbol glowing

Guideline for use/ Good to know before use

The shelf life of food depends on many factors, such as the initial
 germ content of the food, the observance of correct storage and
 cooling conditions and the required hygiene during processing and
 vacuuming. Some foods might be also not suitable for vacuum
 storage.

Clean the vacuum boxes and rubber seal before using them and
 make sure every part is dry.

Do not fill the boxes completely, always leave space to the edge. If
 the box is overfilled, the vacuum may be affected.

Some food can emit gases which can have an impact on the
 vacuum. In these cases the vacuum process might need to be
 repeated.

Troubleshooting

Problem	Possible cause	Remedy
The pump stops during the vacuum sealing process and does not turn back on.	The pump sucked in powder or direct liquids during the vacuum sealing process.	Do not turn the pump upside down. Remove the lower part and clean to ensure that nothing is in there. Make sure the pump are completely dry before operating again. Additional liquids may drip out. Repeat this process if the pump stops again.
The pump does not create vacuum when placed on a container or the vacuum does not last.	The lid of the vacuum container, the silicone seal or the valve are positioned incorrectly.	Check that the positioning is correct and that the lid is properly closed.
	The silicone seal or the container valve are dirty or wet.	Clean and dry the silicone seal and the valve of the container.
	The pump sits too loosely on the valve.	During vacuum sealing, lightly press the pump into the dock surrounding the valve to create a tight seal between the pump and the valve.
The pump does not respond to the On/Off button.	The battery of the pump is low or not charged.	Recharge the vacuum pump.
The above problems cannot be solved.	The vacuum pump could be broken.	Contact customer service. Do not try to repair the pump yourself.

Recycling

This warranty does not cover reduction in battery runtime due to battery age or use, as the life of the battery depends upon the nature of use.



This symbol on the product or on its packaging indicates that the product may not be treated as household waste.

To recycle your product, please take it to an official collection point or to a service center that can remove and recycle the battery and electric parts in a safe and professional way. Follow your country's rules for the separate collection of electrical products and rechargeable batteries.

*Warranty policy and coverage may vary by country.

AU Electrolux Home Products Pty Ltd,
Telephone: 13 13 49, Email: customercare@electrolux.com.au

CN Electrolux Floorcare and Small Appliance China, No.1968,
Gonghexin Rd., Zhabei District, Shanghai, China. 200072
Hotline: 95105801

EG 55 Abo Elfawars Nase City, Sixth district Cairo Egypt,
Phone: +2 (02) 24049686, Web: <https://store.zanussi.com.eg/>

HK 8/F, DCH Building, 20 Kai Cheung Road, Kowloon Bay,
Hong Kong, (+852) 3193 9888

ID PT. Electrolux Indonesia, : Jl. Abdul Muis No. 34, Petojo Selatan,
Central Jakarta 10160, Hotline: (0804 111 9999)

JP Electrolux (Japan) Limited, Kamiyacho MT Building 2F4-3-20
Toranomon Minato-Ku, Tokyo 105-0001, JAPAN Phone: 0120-54-0202

KR 모델명: EAVFK1 Create 3 Vacuum Fresh Kit 제조사: 일렉트로룩스
스웨덴 수입판매처: 일렉트로룩스 코리아(주) 서울 특별시 중구 을지로
100 파인에비뉴빌딩 B동 9층 (04551) www.electrolux.co.kr
고객센터: 1566-1238

Morocco Electrolux Maroc, Floor 5, Crystal 1 building , Marina,
Casablanca, Maroc, Sav@electrolux.com, Phone: 0800095050

Middle East Electrolux Appliances Middle East DMCC 40th Floor,
Mazaya Business Avenue BB1, Jumeirah Lake Towers, P.O. Box 336148,
Dubai, United Arab Emirates, Service @serviceame@electrolux.com,
t: +(971) 4 5100 200

MY Electrolux Home Appliances Sdn. Bhd.,
Corporate Office Address: 7th Floor, Tower 2, PJ 33, No 3, Jalan
Professor Khoo Kay Kim, Seksyen 13, 46200 Petaling Jaya, Selangor,
Malaysia. Consumer Care Centre Address: No. 28, Jalan 15/22, Taman
Perindustrian Tiang Nam, Seksyen 15, 40200 Shah Alam, Selangor,
Malaysia. Customer care line: 1 300 88 1122
NZ Electrolux Home Products Pty Ltd, Telephone: 0800 436 234,
Email: customercare@electrolux.co.nz

PH Electrolux Philippines, Inc., 12/F Cyber Sigma Building, Lawton
Avenue, McKinley West, Fort Bonifacio, Taguig City 1634 Philippines,
Customer Care Hotline: (02) 829-93261 / (02)-8845-4663 Domestic
Toll Free PLDT No: 1-800-10-845-CARE (2273),
SMART Mobile No: +63 998 582 9970,
Globe Mobile No: +63 917 629 7198, Email: wecare@electrolux.com

SA Electrolux South Africa PTY LTD, Address: 3 Aberdeen Road,
Benoni, Industrial sites, Gauteng South Africa, 1500, Post
box...P.O.BOX 389 Benoni, South Africa, 1500, Tel +27 (011)8974600,
Web <https://www.electrolux.co.za>

SG Electrolux S.E.A Pte Ltd, 351 Braddell Road #01-04 351
On Braddell Singapore 579713 Customer care hotline: (+65) 6727 3699

TH Electrolux Thailand Co.,Ltd., Electrolux Building, 14th Floor 1910
New Petchburi Road, Bangkok, Huay Kwang, Bangkok 10320, Call
Center Tel : (+66 2) 725 9000

TW 委製商/進口商: 新加坡商伊萊克斯股份有限公司台灣分公司, 地址: 新
北市板橋區縣民大道2段68號9F, 電話: 0800-888-259

VN Care Line: 1800 58 88 99, Electrolux Vietnam Ltd, Unit 1 & 2, 10th
Floor, Sofic Tower, 10 Mai Chi Tho Street, Thu Thiem Ward, Thu Duc
Urban, Ho Chi Minh City, Vietnam, Tel: (028) 3910 5465, Fax: (028)
3910 5470, Care Email: vn-care@electrolux.com